

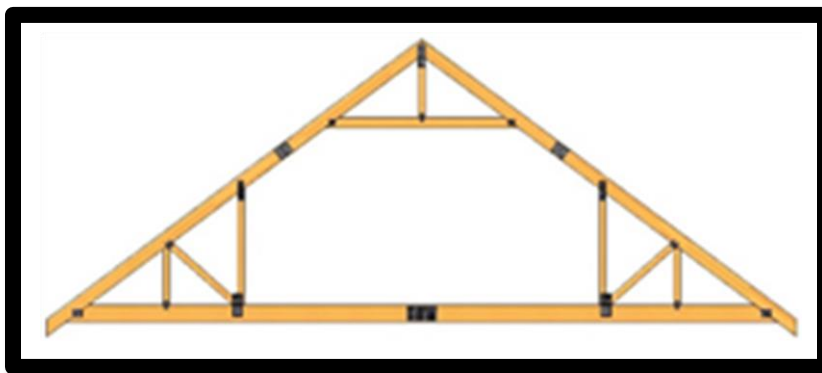
# 30' x 40' Post Frame House with Loft (1,680 sq. ft.-Living Area)

4 Bedrooms, 3 Bath

## Shell Only

- Frost footing
- Roughed-in plumbing
- 4" Concrete floor with wire and plastic
- 1' Closed-in overhang
- Gutters and downspouts
- Single bubble insulation as vapor barrier under roof metal and on side walls
- 2 x 4 Framed interior walls-16" on center
- Trusses 2' on center with a 4/12 pitch
- Vented ridge cap
- 1 Entrance door-Steel pre-hung with rot proof jambs
- 8 Windows-Single-hung, vinyl, Low-E glass
- Standing seam metal roof-26 gauge
- Ag metal siding-29 gauge

## Turnkey – Optional



Room & Attic Trusses for Loft

